

EDITORIAL

6 Top of the Year

BY ILSE GENOVESE

REMOTE SENSING

10 Landsat Program on Track for 2011

BY BARBARA J. RYAN
AND BRUCE K. QUIRK

GIS DAY

14 LizardTech heads back to school for GIS Day

BY JUSTINA BEDNARSKI



GEODESY

16 Triangulation adjustments in Buenos Aires

BY ALBERT H. J. CHRISTENSEN

SURVEYING

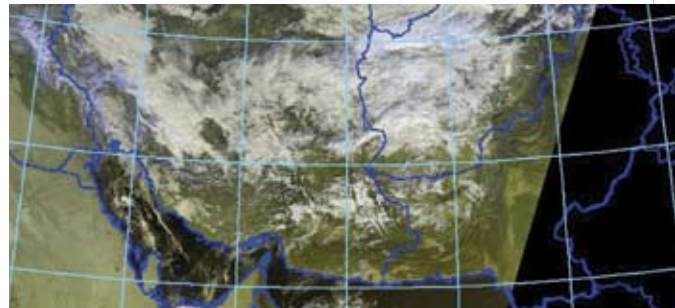
29 Tidelands, Law of the Seas, and other matters

BY GUNTHER GREULICH

GEODESY

34 Iraqi Geospatial Reference System

BY WISAM AL HASSANI



ADVERTISERS

ACSM/LSAW conference, 41
Barnette Industries, 24
CST, 40
ESRI, 8
ESRI, 9
Magellan, cover 4
Topcon Positioning Systems, 7
Trimble Navigation, cover 2 & p.4
University of Maine, 28



ACSM staff at year-end visit to the Steven F. Udvar Hazy Center of the National Air and Space Museum

CONTENTS

ACSM BULLETIN DECEMBER 2007 NUMBER 230



COLUMNS

27 **Ask Dr. Map!—"E pur si muove"**

BY DR. MAP

42 **FIG Report vol. II, no.5: Reports from FIG Commissions 5,6,7, and 9**

BY DAVID DOYLE, JOHN HAMILTON,
JOHN HOHOL, AND ROBERT FOSTER



THE YEAR IN REVIEW

45 **Nation celebrates 400th anniversary of Jamestown, BY ILSE GENOVESE** **The Year in Science, FROM DISCOVER** **Top contributions to the ACSM Bulletin,**

BY ILSE GENOVESE

ON THE WEB

Complete issues of the *ACSM Bulletin* nos 225 to 230 are accessible at www.acsmcongress.org/webmazine.htm.

ANNOUNCEMENTS

26 **WorldView-1 reaches full operational capability**

BY KRISTINA JOSS

28 **Encouter Canada— book review**

BY E. RUSSELL JOHNSTON III

33 **Toys for technocrats—**

BY ILSE GENOVESE

39 **Contributors to NSPS Foundation, Inc.**

BY DAWN JAMES



IN MEMORIAM

25 **Silvio A. Bedini, 1917-2007**

BY PATRICIA SULLIVAN

Join Our Growing Government Team

ESRI helps governments worldwide integrate geospatial technology into their organizations. Our dynamic sales, marketing, and consulting experts work together to provide strategic direction and leadership for federal, state, regional, and local government agencies.

We are looking for energetic, articulate people who are enthusiastic about GIS technology and have expertise in government-related disciplines for the following positions:

- **Community Development Industry Manager**
- **AEC Industry Marketing Specialist**
- **Engineering Industry Marketing Specialist**
- **Federal Marketing Specialist**
- **Local Government and LIS Consultants/Project Managers**
- **Account Managers**

Join the team dedicated to helping government agencies improve the quality of life for their constituents.



Copyright © 2007 ESRI. All rights reserved. ESRI, the ESRI globe logo, and www.esri.com are trademarks, registered trademarks, or service marks of ESRI in the United States, the European Community, or certain other jurisdictions. ESRI is an equal opportunity employer.

Learn more and apply online at www.esri.com/careers/govt.

FRONT & BACK COVERS Front cover (main photo): Eng. Wisam Al Hassani collects CORS data for the new Iraqi Geospatial Reference System. [Photo credit: Survey Division, General Directorate for Surveying and Mapping in Iraq.] Top photo: A super oil tanker near the Al Basrah oil terminal. [DoD photo by Petty Officer 1st class David C. Lloyd, U.S. Navy (Released).]